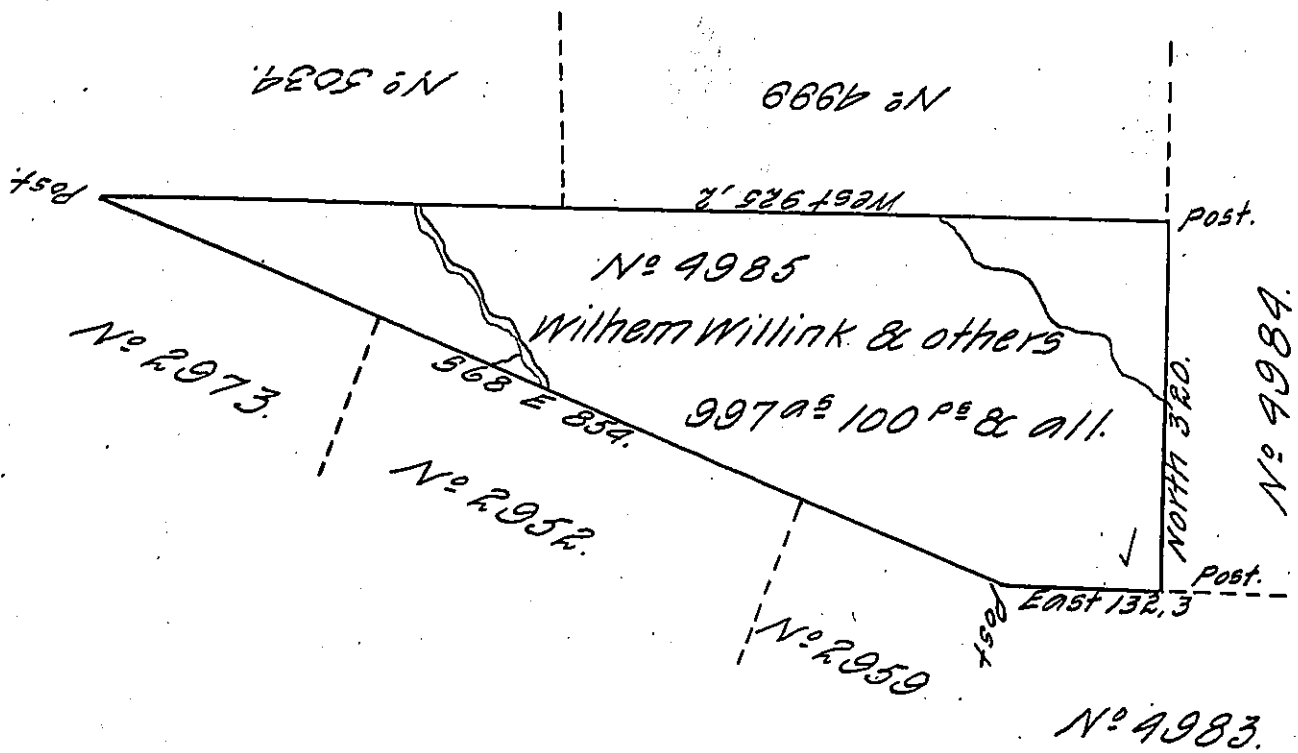


13.



Situate on the Waters of Sinamahoning Creek in North<sup>d</sup> County containing 997<sup>a</sup> & 100<sup>P</sup> and the usual allowance for Roads.

Surveyed the 19<sup>th</sup> day of June 1794 for Wilhem Willink and others in persewance of a Warrant No 4985. Dated the 3<sup>rd</sup> day of Feby. 1794.

John Canan D.S.

Daniel Brodhead Esq. S.G.

IN TESTIMONY that the above is a copy of the original remaining on file in the Department of Internal Affairs of Pennsylvania, made conformably to an Act of Assembly approved the 16th day of February, 1833, I have hereunto set my Hand and caused the Seal of said Department to be affixed at Harrisburg, this nineteenth day of April 1907.

*Geo. P. Brown*  
Secretary of Internal Affairs.